



**CHALMERS**

CHURCH EDINBURGH

2020-30

BUILDING



Redeveloping the building

# A THREE STAGE PLAN TO EQUIP CHALMERS WITH THE RIGHT BUILDINGS FOR ITS LONG TERM MINISTRY

---

## STAGE 1: BUYING A CHURCH

In December 2016 Chalmers was delighted to purchase its current building, with Sunday services and weekday activities moving onsite from March 2017. Chalmers is now very much part of the Morningside community.

## STAGE 2: BUYING A HOUSE

In October 2017 Chalmers purchased a house, providing a home for the minister's family. Again, we were glad to secure the building that is now a home for Robin, Sally and their family.

## STAGE 3: REDEVELOPING THE BUILDING FOR LONG TERM MINISTRY

From Autumn 2020 we have full use of the building, having previously shared it with Napier. There is some enhancement work that will increase the ministry capacity of the building that we wish to undertake.



WINTER 2016/2017



AUTUMN 2017



IN THE NEXT YEAR

**This booklet outlines the redevelopment plans.**

# REDEVELOPMENT INSPIRED BY 2020-30 VISION AND BEYOND

---

A SEPARATE BOOKLET – CHALMERS 2020-30 VISION – SETS OUT THE PURPOSE, CONVICTIONS AND ETHOS OF CHALMERS FOR THE NEXT TEN YEARS, AND BEYOND TO FUTURE GENERATIONS. THERE ARE TWO CENTRAL DIMENSIONS TO THIS VISION – CHALMERS AS A LOCAL CHURCH AND CHALMERS SERVING THE WIDER CHURCH. THE BUILDING REDEVELOPMENT REFLECTS THIS.

## **1. A facility that is open all week for congregational use and serving the community**

Through the week Chalmers will be 'open', providing a hub for ministry and evangelism in the community.

## **2. A facility that can accommodate 'messy' groups like Impact and Toddlers**

The auditorium will be kept simple with washable flooring to enable it to be used by groups that require a larger space.

## **3. A building that can accommodate growth to a congregation of 500**

The main auditorium will have a regular capacity of 302 when set theatre style. This allows us to easily accommodate 250 people at each of our services with room for growth. The regular configuration can be extended by 120 seats at special services eg Christmas, baptisms.

## **4. A training facility**

A building that will provide the necessary teaching and study

spaces for the number of people training at Chalmers (currently nine people). We would also like to accommodate others training for ministry in Edinburgh for city-wide teaching and training seminars.

## **5. A facility that offers maximum flexibility of break out / small group spaces**

The redevelopment will give us eight break out spaces. These will be used in various ways for example for small groups, training and providing a safe and effective environment for children's work.

## **6. An excellent welcoming space for Sundays and weekdays**

The rear of the auditorium is a prime space for chatting before and after services. The south transept will also open into the

auditorium giving extra space when needed.

### **7. Office and study spaces for staff to work on site**

The break out rooms will be used as work and study spaces when not required for ministry.

### **8. A mindset that sees all spaces as flexible / multi-use, with a mixture of formal and informal spaces.**

Through the week the spaces we create will be used for different purposes, being set up as required. The break out and meeting rooms will be kept flexible so they can be used in different ways. Some rooms will have the option of soft furnishings.

### **9. A commercial kitchen for our catering needs**

The kitchen will be sufficient to cater for meals for 140 people.

### **10. Bright contemporary feel, yet in a way that complements a traditional building**

We are working with the architects and creative people within the congregation to ensure that this is achieved.

### **11. Well-lit building**

New high-quality lighting is proposed that will give flexible lighting options for events. There will be some feature lighting of architecture. We may backlight the stained glass windows.

### **12. Good audio-visual set up, adequate for our needs, including some teaching aids**

There will be a permanent AV installation on a new gantry in front of the former gallery. This allows permanent set up giving significantly more AV stability without disturbing auditorium use. We also hope to install technology to assist with training.

### **13. Creative approach to storage**

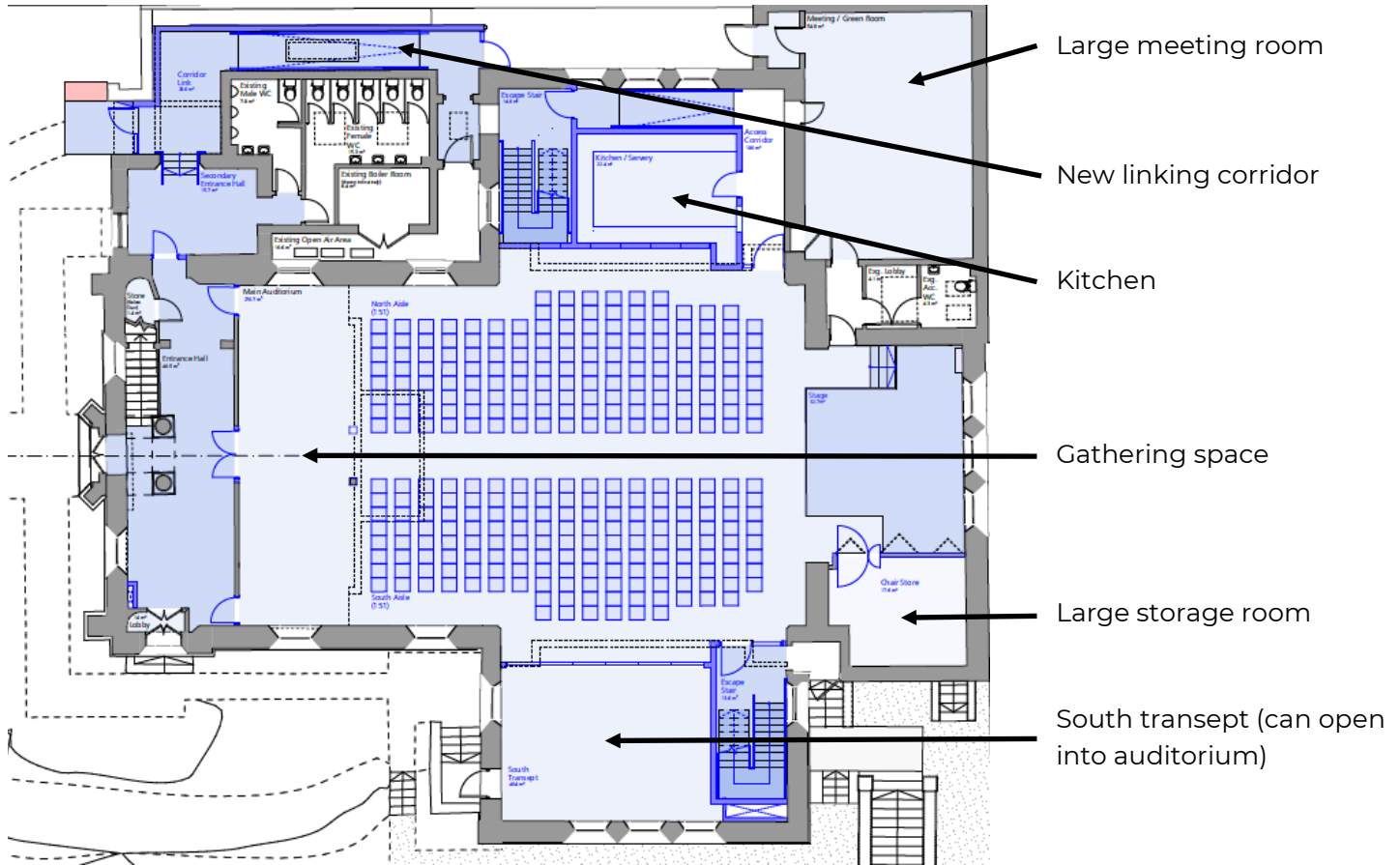
The design maximises room sizes while also providing good storage.

### **14. Sensitivity to 'historic' and 'aesthetic' aspects of the building, but letting ministry needs influence its development and use**

We are working with the architects, creative people within the congregation and ministry staff to ensure that this is achieved.

### **15. Facility that can be used by other churches / ministry groups for training, conferences and events**

Having benefited from practical expressions of gospel partnership in the city, we'd want the building to be used by others in advancing the gospel.



Large meeting room

New linking corridor

Kitchen

Gathering space

Large storage room

South transept (can open into auditorium)

Inside the building—proposed ground floor plan

# GROUND FLOOR REDEVELOPMENT

---

## MAIN AUDITORIUM

The main area of the auditorium will seat 302 people. The two rooms at the rear of the auditorium will be removed creating an excellent gathering space with the option of an additional 70 seats for special services. Permanent AV will be installed.

The feel of the auditorium will be contemporary and spacious with better lighting, redecoration, a gathering space and being able to see above the proposed transept structures.

## STAGE AREA

The stage area will be cut back so it is in line with the walls either side, with the pulpit and the organ console removed.

## SOUTH TRANSEPT

The south transept will become a flexible room, that can either be fully enclosed or open up into the auditorium giving additional milling space or seats for larger gatherings.

## KITCHEN

A commercial kitchen will be installed in the north transept, that caters for 140 covers. This location provides good access to the main auditorium and many of the break out rooms.

## LARGE MEETING ROOM

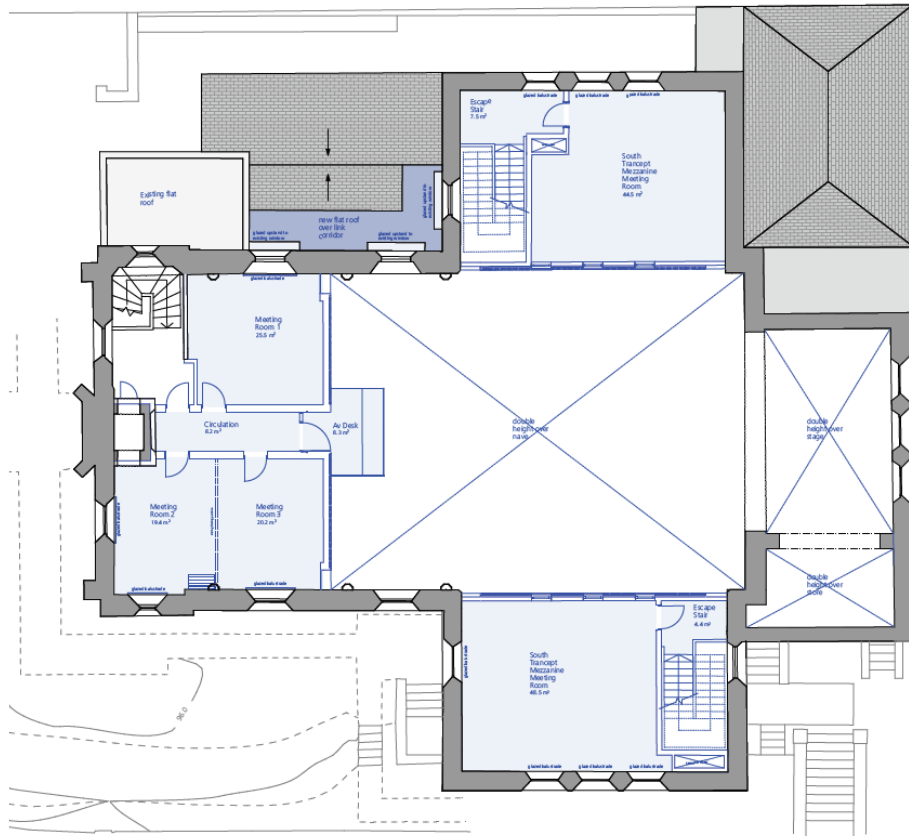
The Green Room will become a meeting room that will be used for language class, student lunch, small groups, training and children's work.

## LINKING CORRIDOR

A corridor will be built between the foyer and the large meeting room, providing better flow around the building.

## STORAGE

A large storage area will be built behind the organ loft. This will replace the storage under the gallery area. Essential but minimal storage will be built into meeting rooms.



Inside the building—proposed first floor plan



# FIRST FLOOR REDEVELOPMENT—FIVE MULTI-PURPOSE ROOMS

---

## **GALLERY AREA—3 ROOMS & AV GANTRY**

The gallery area will be remodelled to make the best use of the space for our purposes. Further soundproofing will be built in and a roof put over the space. There is a larger room to the north and two smaller rooms to the south which can be opened up through a partition to form a larger room. All these rooms have some natural daylight.

From the gallery area there is access to an AV gantry where the sound, lighting and video desks will be permanently installed.

## **UPPER NORTH TRANSEPT**

The upstairs area of the north transept will be developed into a multi-purpose room that is slightly smaller than the current Green Room.

## **UPPER SOUTH TRANSEPT**

Similarly, the upstairs area of the south transept will be developed into a multi-purpose room that is slightly smaller than the current Green Room.

## **HOW WILL WE USE THESE MULTI-PURPOSE ROOMS?**

Having a number of rooms will allow us to:

- Run a range of children's programmes onsite on a Sunday
- Have excellent break out space for weekday small groups
- Run weekday and evening outreach groups (eg language class, toddlers, ReadMARK groups, Impact)
- Provide an excellent training environment
- Provide appropriate onsite work and study space for the staff and MAP team



Illustration courtesy  
of LDN Architects

Concept illustration of auditorium post redevelopment

# OVERVIEW: A LONG TERM BASE FOR GOSPEL WORK AND VISION

---

Our building is our church family home, but it's much more than that, it's a base for our gospel work and vision.

## REACHING OUT WITH THE GOOD NEWS

The redevelopment will provide a building that gives room for growth by people becoming Christians. The auditorium gives room for our services to grow. The break out rooms can be used for groups or individuals meeting to read Mark's Gospel or for ministries that introduce people to Christian community. Our community offers exciting opportunities for evangelism. We

pray that all the preparation and training we have done as a church in evangelism will bear fruit and many people will come to faith in Jesus. We believe that God goes ahead of us, preparing the ground and preparing us.

## BUILDING COMMITTED DISCIPLES

The redevelopment gives an excellent base for Sunday services, activities for young people and small groups. Rooms will also be used for one to ones through the week. Again the plans allow for room for growth of around 33%.

## TRAINING HUB

Training is a major focus at Chalmers. This building provides an excellent facility for training our Ministry Associates and Ministers in Training as well as the wider church family.

## FUTURE CHURCH PLANT

The building does allow room for numerical growth (as Elders we have looked at that in detail) but it doesn't allow us to grow to a church of 500+ people. That is consistent with our commitment to consider planting again in the future.

**Investing in a long-term home for gospel work  
built on the foundations of the gospel, Bible and prayer;  
a hub for reaching, building, training and sending.**

## MORE INFORMATION

---

### OPPORTUNITIES TO SEE THE PLANS

As with any property redevelopment there's lots more we'd like to tell you. More detailed drawings and pictures of the proposed redevelopment will be in the transepts for you to view when it is safe to do so on Sundays.

### UPDATES VIA INFORMATION EVENINGS

The Elders plan to give further updates throughout 2020/21 as plans progress. Dates of these meetings will be advertised on Sundays.

*Chalmers Church Edinburgh is incorporated as a Scottish Charitable Incorporated Organisation  
Scottish Charity Number SC044674*

## ANY QUESTIONS?

Questions and queries are welcome at any time.

If your query relates to pledging or giving to the building fund please contact Joe McNeilly. Joe can be contacted by email on [joe@chalmerschurch.org](mailto:joe@chalmerschurch.org).

With other queries and questions please speak to Robin, Alan or any of the Elders. Questions can also be directed to Naomi Wright, Administrator by phone (447 0000) email [naomi@chalmerschurch.org](mailto:naomi@chalmerschurch.org). If it would be helpful Fiona can arrange for one of the Elders to give you a phone about the redevelopment.